



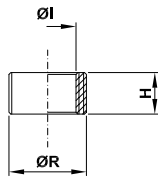
ACCESSORI  
FITTINGS  
ACCESSOIRES  
ARMATUREN UND ZUBEHÖR





**10**

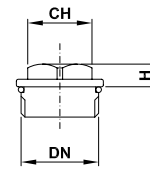
Riduzione gialla OT 58  
 Yellow reduction  
 Réduction jaune  
 Uebergangsstück



$\varnothing I$	1/4"	3/8"	1/2"	3/4"
$\varnothing R$	3/8"	1/2"	3/4"	1"
H	10.5	10.5	11	12
	10	15	20	30
	100	100	50	50
	200	200	100	100
	2	3	2	3

**14**

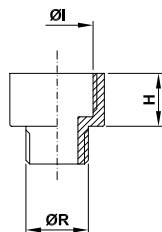
Tappo giallo OT 58  
 Yellow plug  
 Bouchon jaune  
 Verschlusskappe



DN	1/4"	3/8"	1/2"	3/4"	1"	1"1/4"	1"1/2"	2"
CH	10	12	12	15	17	19	22	24
H	5	6	8	9	10	12	12	13
	15	20	25	30	55	100	130	200
	50	50	50	25	25	5	5	5
	200	200	200	100	100	50	50	50
	3	4	5	3	5.5	5	6.5	10

**13**

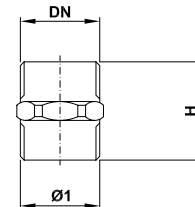
Riduzione gialla OT 58  
 Yellow reduction  
 Réduction jaune  
 Uebergangsstück



$\varnothing I$	3/8"	1/2"	3/4"	1"
$\varnothing R$	1/4"	3/8"	1/2"	3/4"
H	12	15	16	18
	20	25	50	60
	50	50	25	25
	200	200	100	100
	4	5	5	6

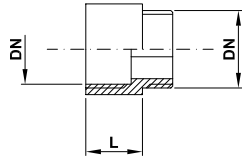
**15**

Nipples giallo OT 58  
 Yellow exagon nipples  
 Mamelon jaune  
 Doppelnippel



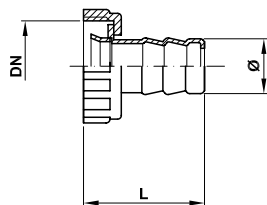
DN	3/8"	3/8"	1/2"	1/2"	3/4"	1"
$\varnothing 1$	3/8"	1/2"	1/2"	3/4"	3/4"	1"
H	25	29	29	36	36	36
	20	25	30	45	55	55
	40	40	50	50	30	15
	200	200	200	100	90	90
	4,5	5,5	6,5	5	5,5	5,5

Prolunga gialla in ottone stampato OT 58  
 Yellow extension in hot pressed brass OT 58  
 Prolonge jaune  
 Verlängerung



DN 3/8												
L	10	15	20	25	30	40	50	60	70	80	90	100
	10	15	35	45	50	55	60	70	75	80	85	90
	25	25	25	25	20	20	20	10	10	10	10	10
	200	200	200	200	100	100	100	50	50	50	50	50
	2	3	7	9	5	6	6	4	4	4	4	5
DN 1/2												
L	10	15	20	25	30	40	50	60	70	80	90	100
	15	20	40	55	60	65	70	80	90	100	105	110
	25	25	25	25	20	20	20	10	10	10	10	10
	200	200	200	200	100	100	100	50	50	50	50	50
	3	4	8	11	6	7	7	4	5	5	5	6
DN 3/4												
L	10	15	20	25	30	40	50					
	40	50	60	65	70	80	90					
	10	10	10	10	10	5	5					
	100	100	100	50	50	25	25					
	4	5	6	3	4	2	2					

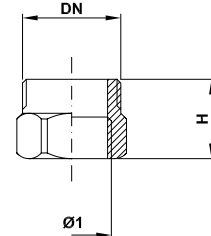
Girello con portagomma giallo in ottone fuso e stampato OT 58  
 Yellow rubber union hose in hot pressed and casting brass OT 58  
 Raccord avec porte caoutchouc jaune en laiton matricé et fondu  
 Schlauchverschraubung



*	3/8"	1/2"	3/4"	1"	1"1/4"	1"1/2"	2"
<b>DN</b>	1/2"	3/4"	1"	1"1/4"	1"1/2"	1"3/4"	2"1/4"
Ø	13	15	20	25	35	40	50
L	30	31	33	43	55	60	64
	25	30	50	90	260	310	395
	25	25	25	20	10	10	5
	100	100	50	40	20	20	10
	2.5	2.5	2.5	4	5.5	6.3	4

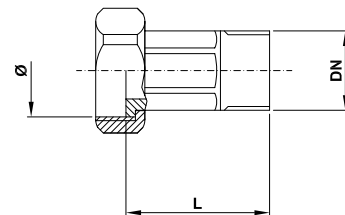
\* Misura valvola nominale  
 Nominal size of valve

Riduzione esagonale OT 58  
 Exagonal reduction  
 Reduction exagonal  
 Uebergangsstück



Ø1	3/8"	1/2"	3/4"	1"	1"1/4"	1"1/2"
Ø2	1/2"	3/4"	1"	1"1/4"	1"1/2"	2"
L	17	19	22	26	30	32
	16	32	56	112	176	230
	50	50	30	15	8	5
	0.87	1.70	1.74	1.74	1.46	1.2

Raccordo contatori  
 Meter couplings  
 Raccord conteur

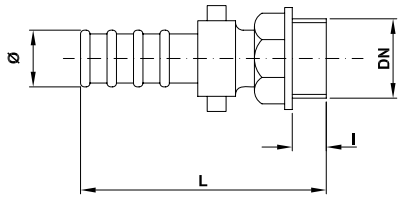


DN	1/2"	3/4"	1"	1"1/4"	1"1/2"	2"
Ø	3/4"	1"	1"1/4"	1"1/2"	2"	2"1/2"
L	35	40	40	45	50	50
	70	103	172	280	320	550
	25	20	15	10	10	5
	1.79	2.10	2.63	2.85	3.27	2.83



### 30

Raccordo diritto portagomma per pompe ottone stampato OT 58  
 Straight rubber union hose for pumps hot pressed brass OT 58  
 Raccord droit porte-tuyau en laiton matricé pour pompes  
 Anschluss für Schlauchverschraubung an gerade Pumpen



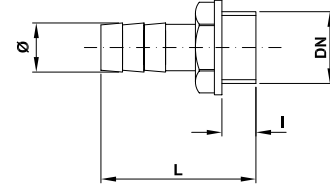
DN	3/8"	1/2"	1/2"	3/4"	3/4"	1"	1"
∅	15	15	18	20	25	25	30
L	56	56	65	65	75	80	95
I	8	9	10	11	11	12	13
	64	65	104	113	153	167	282
	25	25	15	15	15	15	10
	50	50	50	50	50	30	25
	3.3	3.3	5.3	6.8	7.8	5.2	7.2

DN	1 1/4"	1 1/4"	1 1/2"	2"	2"	2 1/2"	2 1/2"	3"	4"
∅	30	35	40	50	60	60	70	80	100
L	94	104	109	122	139	133	152	152	170
I	13	15	16	17	18	18	20	18	20
	294	410	495	750	1140	1080	1460	1720	270
	10	8	6	6	5	5			
	3.1	3.4	3.2	5	6	6			

### 32

Raccordo diritto portagomma ottone stampato OT 58  
 Straight rubber union hose hot pressed brass OT 58  
 Raccord droit porte-tuyau en laiton matricé  
 Gerade Schlauchverschraubung



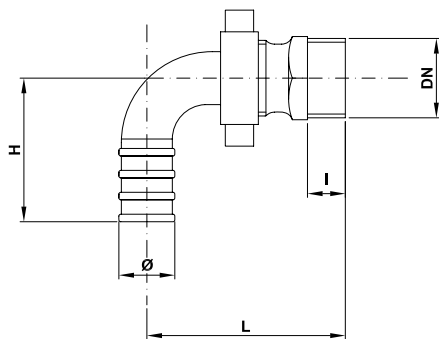
DN	3/8"	3/8"	1/2"	1/2"	1/2"	3/4"	3/4"	1"	1"	1 1/4"	1 1/4"
∅	13	15	13	15	18	20	25	25	30	30	35
L	37	39	41	41	42	47	49	53	55	58	59
I	8	8	9	9	9	10	10	11	12	12	12
	20	24	30	36	36	52	72	83	100	130	130
	30	30	50	50	40	25	20	30	25	20	15
	150	150	150	100	80	100	80	60	50	40	30
	3.1	3.7	4.6	3.7	3	5.3	5.9	5.2	5.2	5.5	4.1

DN	1 1/2"	1 1/2"	2"	2"	2 1/2"	2 1/2"	3"	3"	4"
∅	40	45	50	60	60	70	76	80	100
L	66	74	74	84	94	98	98	102	102
I	13	15	15	16	16	16	18	19	22
	200	210	280	440	485	780	750	725	1170
	12	10	8	5	8	5	5	5	2
	2.6	2.3	2.5	2.4	4	4	4	3.8	2.5

### 31

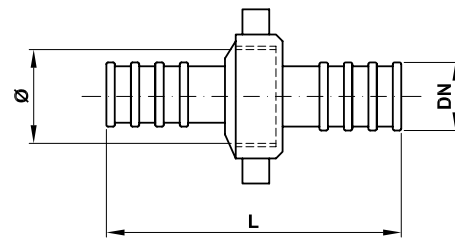
Raccordo portagomma curvo per pompe ottone fuso e stampato OT 58  
 Curved rubber union hose for pumps hot pressed and casting brass OT 58  
 Raccord porte-tuyau en laiton matricé et fondu pour pompes  
 Anschluss für Schlauchverschraubung an gebogene Pumpen



DN	3/8"	1/2"	3/4"	1"	1 1/4"	1 1/2"	2"
∅	15	18	25	30	35	40	50
H	37	49	52	61	62	74	95
L	51	60	68	83	93	97	115
I	8	10	11	13	15	16	17
	82	140	220	395	545	700	1150
	20	10	15	8	5	4	5
	100	50	40	20	15	10	5
	8.4	7.2	9.0	8.0	8.3	7.2	5.9

### 33

Raccordo diritto portagomma giallo ottone stampato OT 58  
 Straight yellow rubber union hose hot pressed brass OT 58  
 Raccord droit porte-tuyau en laiton matricé jaune  
 Gerade Schlauchverschraubung



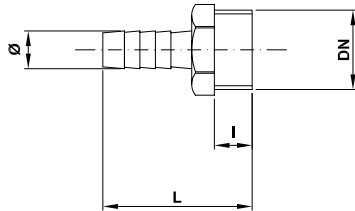
DN	15	18	20	25	30	35
L	65	73	71	90	104	118
∅	1/2"	3/4"	3/4"	1"	1 1/4"	1 1/2"
	60	92	93	140	225	373
	25	15	15	20	10	6
	100	100	60	50	25	15
	6.2	9.4	5.6	7.2	5.8	5.8

DN	40	50	60	70	80	100
L	124	145	160	180	190	210
∅	1 1/2"	2 1/4"	2 1/2"	3"	3 1/2"	4"
	445	740	1035	1465	1810	2610
	6	6	3	2	2	1
	2.8	4.6	3.2	2.9	3.6	2.6

### 34

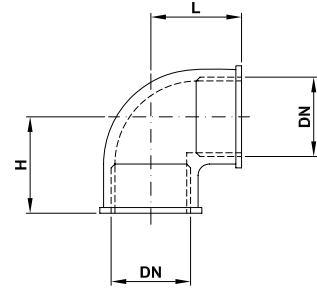
Raccordo portagomma diritto a maschio per gas in OT 58  
 Straight rubber union hose for gas in brass OT 58  
 Raccord droit porte-tuyau en laiton OT 58 pour gas  
 Gerade Schlauchverschraubung



DN	1/4"	3/8"	1/2"
ø	10	10	10
L	32	34	35
l	7	8	8
	15	19	26
	25	25	25
	250	150	100
	3.8	3	2.7

### 38

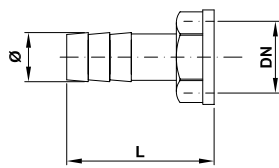
Raccordo a 90° OT 58  
 90° elbow OT 58  
 Coude à 90° OT 58  
 Winkel



DN	1/4"	3/8"	1/2"	3/4"	1"	1 1/4"	1 1/2"	2"
L	20	23	24	25	31	43	46	55
H	20	23	24	25	31	43	46	55
	34	61	64	99	172	295	345	573
	25	25	20	12	6	8	6	6
	0.92	1.53	1.30	1.24	1.09	2.40	2.20	3.60

### 35

Raccordo diritto portagomma a femmina in ottone OT 58  
 Straight rubber female union hose in brass OT 58  
 Raccord droit porte-tuyau en laiton OT 58 femelle  
 Gerade Schlauchverschraubung



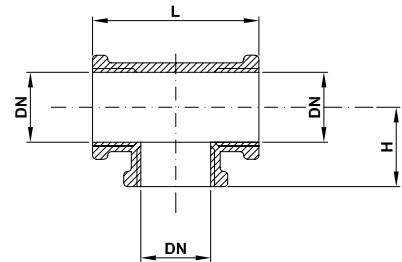
DN	3/8"	3/8"	1/2"	1/2"	1/2"	3/4"	3/4"	1"	1"	1 1/4"
ø	13	15	13	15	18	20	25	25	30	30
L	35	37	39	40	39	43	42	51	51	55
l	7	8	8	8	8	9	9	11	11	13
	20	24	30	30	37	45	50	76	90	120
	30	30	50	50	40	25	20	30	25	20
	150	150	100	100	80	100	60	60	50	40
	3.1	3.7	3.1	3.1	3.2	4.7	3.1	4.8	4.7	5

DN	1 1/4"	1 1/2"	2"
ø	35	40	50
L	66	73	75
l	15	16	16
	172	220	315
	30	24	18
	5.3	5.4	5.9

### 39

Tee in OT 58 sabbiato giallo  
 Yellow sand blasted tee OT 58  
 Tee en laiton OT 58 au nea brosse jaune  
 T-stück

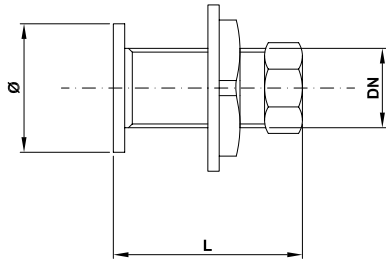


DN	1/4"	3/8"	1/2"	3/4"	1"	1 1/4"	1 1/2"	2"
L	40	43	44	51	62	85	95	116
H	19.5	22	21	25.5	30.5	42	47	57
	44	72	66	110	204	378	500	877
	20	20	20	12	6	6	5	6
	0.94	1.50	1.40	1.40	1.30	2.35	2.58	5.4



## 40

Raccordo per cassoni con tappo cieco giallo  
 Straight coupling with blind yellow plug  
 Raccord droit jaune  
 Anschluss von Schlauchverschraubung



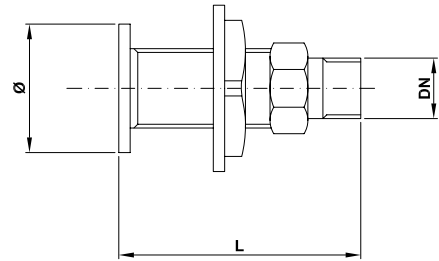
DN	1/2"	3/4"	1"
∅	34	42	49
L	50	54	57
	90	140	205
	20	15	10
	200	160	120
	19	23	25

*MATERIALI: ottone stampato o fuso OT 58  
 Ghiera in lega di alluminio*

*MATERIALS: hot pressed and casting brass OT 58  
 Threaded flange in aluminium alloy*

## 43

Raccordo per cassoni con bocchettone giallo  
 Straight yellow coupling  
 Raccord droit jaune  
 Schlauchverschraubung mit Mundstück



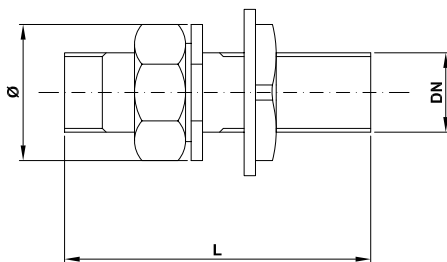
DN	3/8"	1/2"	3/4"	1"
∅	34	34	42	49
L	64	70	77	83
	100	110	160	230
	20	20	20	15
	200	200	160	120
	21	22	26	28

*MATERIALI: ottone stampato o fuso OT 58  
 Ghiera in lega di alluminio*

*MATERIALS: hot pressed and casting brass OT 58  
 Threaded flange in aluminium alloy*

## 41

Raccordo per cassoni diritto giallo  
 Straight yellow coupling  
 Raccord droit jaune  
 Schlauchverschraubung für gerade Kisten



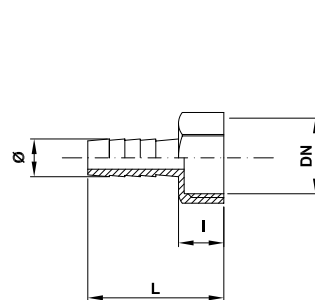
DN	1/2"	3/4"	1"	1"1/4"	1"1/2"	2"
∅	34	42	49	60	65	80
L	81	74	95	95	103	115
	120	180	305	440	580	855
	20	15	8	5	4	3
	200	160	80	50	40	30
	25	29	25	23	24	26

*MATERIALI: ottone stampato o fuso OT 58  
 Ghiera in lega di alluminio*

*MATERIALS: hot pressed and casting brass OT 58  
 Threaded flange in aluminium alloy*

## 46

Raccordo portagomma per gas  
 Rubber union hose for gas  
 Raccord porte-tuyau pour gas  
 Gerade Schlauchverschraubung

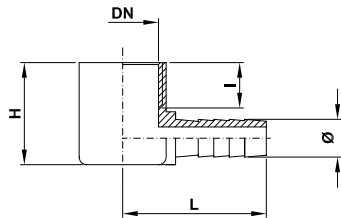


DN	3/8"	1/2"
∅	10	10
l	12	12
L	35	36
	23	33
	25	10



48

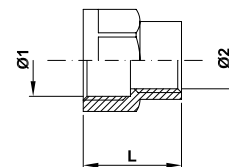
Raccordo portagomma per gas  
 Rubber union hose for gas  
 Racord porte-tuyau pour gas  
 Gerade Schlauchverschraubung



DN	3/8"	1/2"
Ø	10	10
H	23	20
l	12	12
L	36	38
	51	54
	10	10

52

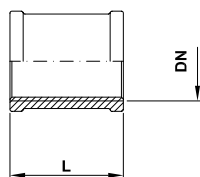
Manicotto ridotto  
 Reduced couplings  
 Manchons reduit  
 Verbindungs mufte



Ø1	1/2"	3/4"	3/4"	1"	1"
Ø2	3/8"	3/8"	1/2"	3/4"	1/2"
L	24	30	30	33	44
	27	36	36	70	70

50

Manicotto  
 Couplings  
 Manchons  
 Verbindungs mufte



DN	1/4"	3/8"	1/2"	3/4"	1"	1"1/4"	1"1/2"	2"
L	26	30	30	33	44	37	40	50
	16	30	45	62	126	111	214	388
	25	25	25	10	10	10	5	5

